



i n t e r i o r s

**GAYLORD SANDS
SPECIFICATION BOOK**

2011



DESIGNERS

Kimberly Fisher
Lindsey Wagner
Amanda Anthony
Sarah Ferrara

CONTACT INFORMATION

1001 Hilltop Drive
West Lafayette, Indiana 47906

Ph. 574.274.7446

www.KLASinteriors.com

CLIENT

Gaylord Sands Restaurant & Lounge

3200 Las Vegas Boulevard South
Las Vegas, Nevada 89101



SPECIFICATIONS INDEX

Kitchen Equipment	4.
Bar Equipment	33.
Plumbing Fixtures & Accessories	47.
Furniture	64.
Finishes	71.
Lighting	84.
Hardware	97.



i n t e r i o r s

KITCHEN EQUIPMENT

SPECIFICATIONS

PROJECT TITLE: Gaylord Sands
PROJECT NUMBER: 00956

MANUFACTURER: NOR LAKE KOLD LOCKER

ITEM: KLB7788-C

COLOR: N/A

FINISH: STAINLESS STEEL

DESCRIPTION: WALK IN COOLER



SYMBOL: KA2

LOCATION: KITCHEN

REFERENCE: ENLARGED FLOORPLAN

ADDITIONAL INFORMATION: N/A

SPECIFICATIONS

PROJECT TITLE: Gaylord Sands
PROJECT NUMBER: 00956

MANUFACTURER: NOR LAKE KOLD LOCKER

ITEM: KODF7788-C

COLOR: N/A

FINISH: STAINLESS STEEL

DESCRIPTION: WALK IN FREEZER



SYMBOL: KA3

LOCATION: KITCHEN

REFERENCE: ENLARGED FLOORPLAN

ADDITIONAL INFORMATION: N/A

SPECIFICATIONS

PROJECT TITLE: Gaylord Sands
PROJECT NUMBER: 00956

MANUFACTURER: VIKING

ITEM: DMOD241

COLOR: N/A

FINISH: STAINLESS STEEL



SYMBOL: KA4

DESCRIPTION: UNDER COUNTER MICROWAVE

LOCATION: UNDER THE COUNTER IN KITCHEN

REFERENCE: ENLARGED FLOORPLAN

ADDITIONAL INFORMATION: N/A

SPECIFICATIONS

PROJECT TITLE: Gaylord Sands
PROJECT NUMBER: 00956

MANUFACTURER: VIKING

ITEM: V12FRDL

COLOR: N/A

FINISH: STAINLESS STEEL

DESCRIPTION: DEEP FRYER



SYMBOL: KA10

LOCATION: KITCHEN

REFERENCE: ENLARGED FLOORPLAN

ADDITIONAL INFORMATION: N/A

SPECIFICATIONS

PROJECT TITLE: Gaylord Sands
PROJECT NUMBER: 00956

MANUFACTURER: VIKING

ITEM: V36G

COLOR: N/A

FINISH: STAINLESS STEEL

DESCRIPTION: GRIDDLE



SYMBOL: KA8

LOCATION: KITCHEN

REFERENCE: ENLARGED FLOORPLAN

ADDITIONAL INFORMATION: N/A

SPECIFICATIONS

PROJECT TITLE: Gaylord Sands
PROJECT NUMBER: 00956

MANUFACTURER: VIKING

ITEM: VEWD173

COLOR: N/A

FINISH: STAINLESS STEEL



DESCRIPTION: WARMING DRAWER

SYMBOL: KA15

LOCATION: KITCHEN

REFERENCE: ENLARGED FLOORPLAN

ADDITIONAL INFORMATION: N/A

SPECIFICATIONS

PROJECT TITLE: Gaylord Sands
PROJECT NUMBER: 00956

MANUFACTURER: VIKING

ITEM: V24C

COLOR: N/A

FINISH: STAINLESS STEEL

DESCRIPTION: CHAR BROILER



SYMBOL: KA17

LOCATION: KITCHEN

REFERENCE: ENLARGED FLOORPLAN

ADDITIONAL INFORMATION: N/A

SPECIFICATIONS

PROJECT TITLE: Gaylord Sands
PROJECT NUMBER: 00956

MANUFACTURER: SCOTSMAN

ITEM: C0330MA-1AB330F

COLOR: N/A

FINISH: STAINLESS STEEL & PLASTIC

DESCRIPTION: ICE MAKER



SYMBOL: KA6

LOCATION: KITCHEN

REFERENCE: ENLARGED FLOORPLAN

ADDITIONAL INFORMATION: N/A

SPECIFICATIONS

PROJECT TITLE: Gaylord Sands
PROJECT NUMBER: 00956

MANUFACTURER: TRUE

ITEM: 675-073

COLOR: N/A

FINISH: STAINLESS STEEL

DESCRIPTION: REACH IN FRIDGE



SYMBOL: KA2

LOCATION: KITCHEN

REFERENCE: ENLARGED FLOORPLAN

ADDITIONAL INFORMATION: N/A

SPECIFICATIONS

PROJECT TITLE: Gaylord Sands
PROJECT NUMBER: 00956

MANUFACTURER: TRAUlsen

ITEM: 955-006

COLOR: N/A

FINISH: STAINLESS STEEL

DESCRIPTION: REACH IN FREEZER



SYMBOL: KA3

LOCATION: KITCHEN

REFERENCE: ENLARGED FLOORPLAN

ADDITIONAL INFORMATION: N/A

SPECIFICATIONS

PROJECT TITLE: Gaylord Sands
PROJECT NUMBER: 00956

MANUFACTURER: VIKING

ITEM: V36B6 plus a V36SO

COLOR: N/A

FINISH: STAINLESS STEEL

DESCRIPTION: RANGE & OVEN UNIT



SYMBOL: KA 7 & 18

LOCATION: KITCHEN

REFERENCE: ENLARGED FLOORPLAN

ADDITIONAL INFORMATION: N/A

SPECIFICATIONS

PROJECT TITLE: Gaylord Sands
PROJECT NUMBER: 00956

MANUFACTURER: ACCUTEMP

ITEM:S6208ID060.020

COLOR: N/A

FINISH: STAINLESS STEEL

DESCRIPTION: STEAMER



SYMBOL: KA 14

LOCATION: KITCHEN

REFERENCE: ENLARGED FLOORPLAN

ADDITIONAL INFORMATION: N/A

SPECIFICATIONS

PROJECT TITLE: Gaylord Sands
PROJECT NUMBER: 00956

MANUFACTURER: Eurodib

ITEM NUMBER: P700S

COLOR: N/A

FINISH: Stainless Steel

DESCRIPTION: Dishwashing Machine
30-20-15 rack per hour



SYMBOL: KA1

LOCATION: Dishwashing Station

REFERENCE: Enlarged Floor Plan

ADDITIONAL INFORMATION: N/A

SPECIFICATIONS

PROJECT TITLE: Gaylord Sands
PROJECT NUMBER: 00956

MANUFACTURER: NSF Commercial

ITEM NUMBER: AA-988-G

COLOR: N/A

FINISH: Brass, Polished Chrome Finish

DESCRIPTION: 8" Wall Mount & Deck Mount Pre-Rinse Blaster



LOCATION: Dishwashing Station

REFERENCE: Enlarged Floor Plan

ADDITIONAL INFORMATION: N/A

SPECIFICATIONS

PROJECT TITLE: Gaylord Sands
PROJECT NUMBER: 00956

MANUFACTURER: Viking

ITEM NUMBER: V11420

COLOR: N/A

FINISH: Stainless Steel

DESCRIPTION: Gas Braising Pan with
39" x 23" Cooking Surface



SYMBOL: KA19

LOCATION: Kitchen

REFERENCE: Enlarged Floor Plan

ADDITIONAL INFORMATION: N/A

SPECIFICATIONS

PROJECT TITLE: Gaylord Sands
PROJECT NUMBER: 00956

MANUFACTURER: Regency

ITEM NUMBER: 600S3242424

COLOR: N/A

FINISH: Stainless Steel

DESCRIPTION: 3 Compartment Commercial
Prep/Pot Sink with One Drainboard



SYMBOL: KA24

LOCATION: Dishwashing Station

REFERENCE: Enlarged Floor Plan

ADDITIONAL INFORMATION: N/A

SPECIFICATIONS

PROJECT TITLE: Gaylord Sands
PROJECT NUMBER: 00956

MANUFACTURER: Hobart

ITEM NUMBER: HL 600 Mixer

COLOR: Metallic Gray

FINISH: Powder Coat Finish w/ Stainless Steel Bowl

DESCRIPTION: Legacy Floor Mixer with swing-out bowl for ease of adding and taking out product



SYMBOL: KA22

LOCATION: Kitchen

REFERENCE: Enlarged Floor Plan

ADDITIONAL INFORMATION: 60 Quart Capacity

SPECIFICATIONS

PROJECT TITLE: Gaylord Sands
PROJECT NUMBER: 00956

MANUFACTURER: Hobart

ITEM NUMBER: 3913N

COLOR: N/A

FINISH: Stainless Steel

DESCRIPTION: 300 Series Slicer with Zero knife exposure when cleaning and sharpening



SYMBOL: KA16

LOCATION: Kitchen

REFERENCE: Enlarged Floor Plan

ADDITIONAL INFORMATION: N/A

SPECIFICATIONS

PROJECT TITLE: Gaylord Sands
PROJECT NUMBER: 00956

MANUFACTURER: Hatco Corporation

ITEM NUMBER: HWBI-4D

COLOR: N/A

FINISH: Stainless Steel

DESCRIPTION: Ganged Heat Well with
Independent Drains



SYMBOL: KA9

LOCATION: Kitchen

REFERENCE: Enlarged Floor Plan

ADDITIONAL INFORMATION: N/A

SPECIFICATIONS

PROJECT TITLE: Gaylord Sands
PROJECT NUMBER: 00956

MANUFACTURER: Bunn

ITEM NUMBER: AXIOM-DV-3

COLOR: N/A

FINISH: Stainless Steel

DESCRIPTION: 12 Cup Dual-Voltage Coffee Brewer with 2 Additional Warmers



SYMBOL: WS4

LOCATION: Wait Stations, Kitchen

REFERENCE: Enlarged Floor Plans

ADDITIONAL INFORMATION: N/A

SPECIFICATIONS

PROJECT TITLE: Gaylord Sands
PROJECT NUMBER: 00956

MANUFACTURER: Bunn

ITEM NUMBER: ITCB-TDO-4

COLOR: N/A

FINISH: Stainless Steel

DESCRIPTION: Infusion 3 Gallon Iced Tea Brewer with Dispenser

LOCATION: Wait Stations, Kitchen

REFERENCE: Enlarged Floor Plans

ADDITIONAL INFORMATION: N/A



SYMBOL: WS5

SPECIFICATIONS

PROJECT TITLE: Gaylord Sands
PROJECT NUMBER: 00956

MANUFACTURER: Lancer

ITEM NUMBER: MRN ICD23300 HI

COLOR: N/A

FINISH: Stainless Steel

DESCRIPTION: High Performance Drop-In
Dispenser with 8 Valves and Ice Bin



SYMBOL: WS3

LOCATION: Wait Stations, Kitchen

REFERENCE: Enlarged Floor Plans

ADDITIONAL INFORMATION: N/A

SPECIFICATIONS

PROJECT TITLE: Gaylord Sands
PROJECT NUMBER: 00956

MANUFACTURER: Supreme

ITEM NUMBER: WH-7054-585

COLOR: N/A

FINISH: Chrome

DESCRIPTION: Wide Metal Stacking Shelf
200 Pound Capacity



LOCATION: Kitchen

REFERENCE: First Floor Plan

ADDITIONAL INFORMATION: N/A

SPECIFICATIONS

PROJECT TITLE: Gaylord Sands
PROJECT NUMBER: 00956

MANUFACTURER: TimeTrax

ITEM NUMBER: 63326

COLOR: N/A

FINISH: Plastic

DESCRIPTION: Biometric Thumbprint Time Clock, Fingerprint reader for up to 150 employees



SYMBOL: KA13

LOCATION: Employee Break Room

REFERENCE: First Floor Plan

ADDITIONAL INFORMATION: N/A

SPECIFICATIONS

PROJECT TITLE: Gaylord Sands
PROJECT NUMBER: 00956

MANUFACTURER: Supreme

ITEM NUMBER: WH7060-322

COLOR: N/A

FINISH: Chrome Steel

DESCRIPTION: 4 Tier Chrome Steel Shelving
 350 Pound Shelf Capacity
 14"D x 36"W x 54"H



LOCATION: Dry Storage

REFERENCE: First Floor Plan

ADDITIONAL INFORMATION: N/A

SPECIFICATIONS

PROJECT TITLE: Gaylord Sands
PROJECT NUMBER: 00956

MANUFACTURER: Sloan

ITEM NUMBER: EHS-1700

COLOR: N/A

FINISH: Stainless Steel

DESCRIPTION: Electronic Hand Washing Sink with OPTIMA-Sensor Faucet



SYMBOL: KA23

LOCATION: Kitchen

REFERENCE: Enlarged Floor Plans

ADDITIONAL INFORMATION: N/A

SPECIFICATIONS

PROJECT TITLE: Gaylord Sands
PROJECT NUMBER: 00956

MANUFACTURER: Griffin

ITEM NUMBER: 9-OP-40

COLOR: N/A

FINISH: Stainless Steel

DESCRIPTION: Advance Mop Sink (floor mounted)



SYMBOL: KA11

LOCATION: Kitchen

REFERENCE: First Floor Plan

ADDITIONAL INFORMATION: N/A

SPECIFICATIONS

PROJECT TITLE: Gaylord Sands
PROJECT NUMBER: 00956

MANUFACTURER: Salsbury Industries

ITEM NUMBER: 37368

COLOR: Gray

FINISH: Plastic Laminate

DESCRIPTION: Double Tier “S” Style Designer Lockers
 12 Lockers Total (2 Lockers Tall, 6 Lockers Wide)



SYMBOL: KA12

LOCATION: Employee Break Room

REFERENCE: First Floor Plan

ADDITIONAL INFORMATION: N/A



i n t e r i o r s

BAR EQUIPMENT

SPECIFICATIONS

PROJECT TITLE: Gaylord Sands
PROJECT NUMBER: 00956

MANUFACTURER: True

ITEM NUMBER: TD-36-12

COLOR: Black

FINISH: Vinyl Exterior

DESCRIPTION: Horizontal Beer Cooler holds 11 cases of 12oz cans longneck bottles or 14 ½ cases of 12oz cans and has 2 adjustable bin dividers



SYMBOL: BA8

LOCATION: Bar

REFERENCE: Enlarged Floor Plans

ADDITIONAL INFORMATION: N/A

SPECIFICATIONS

PROJECT TITLE: Gaylord Sands
PROJECT NUMBER: 00956

MANUFACTURER: Wunder-Bar

ITEM NUMBER: 75-0104-00

COLOR: N/A

FINISH: Stainless Steel

DESCRIPTION: Stainless One Dispensing System



SYMBOL: BA5

LOCATION: Bar

REFERENCE: Enlarged Floor Plans

ADDITIONAL INFORMATION: Quantity = 4

SPECIFICATIONS

PROJECT TITLE: Gaylord Sands
PROJECT NUMBER: 00956

MANUFACTURER: American Beverage

ITEM NUMBER: ABEH-3616

COLOR: N/A

FINISH: Stainless Steel

DESCRIPTION: Deluxe drip tray with metal grid and drain



SYMBOL: BA13

LOCATION: Bar

REFERENCE: Enlarged Floor Plans

ADDITIONAL INFORMATION: N/A

SPECIFICATIONS

PROJECT TITLE: Gaylord Sands
PROJECT NUMBER: 00956

MANUFACTURER: Beer Taps

ITEM NUMBER: 01-0020006

COLOR: N/A

FINISH: Ceramic

DESCRIPTION: Killian's Irish Red Beer Tap Handle



SYMBOL: BA14

LOCATION: Bar

REFERENCE: Enlarged Floor Plans

ADDITIONAL INFORMATION: N/A

SPECIFICATIONS

PROJECT TITLE: Gaylord Sands
PROJECT NUMBER: 00956

MANUFACTURER: Beer Taps

ITEM NUMBER: samth

COLOR: N/A

FINISH: Plastic and Enamel

DESCRIPTION: Samuel Adams Beer Tap Handle



SYMBOL: BA15

LOCATION: Bar

REFERENCE: Enlarged Floor Plans

ADDITIONAL INFORMATION: N/A

SPECIFICATIONS

PROJECT TITLE: Gaylord Sands
PROJECT NUMBER: 00956

MANUFACTURER: Beer Taps

ITEM NUMBER: bud-light-tap-handle

COLOR: N/A

FINISH: Plastic and Enamel

DESCRIPTION: Bud Light Beer Tap Handle



SYMBOL: BA16

LOCATION: Bar

REFERENCE: Enlarged Floor Plans

ADDITIONAL INFORMATION: N/A

SPECIFICATIONS

PROJECT TITLE: Gaylord Sands
PROJECT NUMBER: 00956

MANUFACTURER: Beer Taps

ITEM NUMBER: guinth1

COLOR: N/A

FINISH: Ceramic

DESCRIPTION: Guinness Beer Tap Handle



SYMBOL: BA17

LOCATION: Bar

REFERENCE: Enlarged Floor Plans

ADDITIONAL INFORMATION: N/A

SPECIFICATIONS

PROJECT TITLE: Gaylord Sands
PROJECT NUMBER: 00956

MANUFACTURER: Viking

ITEM NUMBER: VUWC2441

COLOR: N/A

FINISH: Stainless Steel and Glass

DESCRIPTION: 24" Glass Door Dual Zone Wine Cellar



SYMBOL: BA7

LOCATION: Bar

REFERENCE: Enlarged Floor Plans

ADDITIONAL INFORMATION: Features include: Low-E Argon Filled Glass Doors, Keyed Door Lock, Hidden Touchpad Electronic Control, Low-Intensity Interior Lighting, Six Wire Shelves

SPECIFICATIONS

PROJECT TITLE: Gaylord Sands
PROJECT NUMBER: 00956

MANUFACTURER: Supreme Metal

ITEM NUMBER: SLB-33C

COLOR: N/A

FINISH: Stainless Steel w/ Galvanized Steel Legs

DESCRIPTION: Slimline series underbar sinks with 14" x 10" x 10" sink bowls



SYMBOL: BA3

LOCATION: Bar

REFERENCE: Enlarged Floor Plans

ADDITIONAL INFORMATION: N/A

SPECIFICATIONS

PROJECT TITLE: Gaylord Sands
PROJECT NUMBER: 00956

MANUFACTURER: Eagle Group

ITEM NUMBER: EG20.21

COLOR: N/A

FINISH: Stainless Steel

DESCRIPTION: Hand Sink with Standard Wrist Handle Faucet



SYMBOL: BA2

LOCATION: Bar

REFERENCE: Enlarged Floor Plans

ADDITIONAL INFORMATION: Inverted "V" edge rim retards spillage, Rear features a 7 1/2 " high backsplash with a 2" return on a 45 degree angle, Unique deep-drawn positive-drain bowl assures complete drainage to meet the most stringent health code requirements, Comes with mounting brackets to facilitate wall mount installation, and Standard wrist blade handles provided.

SPECIFICATIONS

PROJECT TITLE: Gaylord Sands
PROJECT NUMBER: 00956

MANUFACTURER: Krowne

ITEM NUMBER: KR18-M36R

COLOR: N/A

FINISH: Stainless Steel

DESCRIPTION: Royal Multi Stations with 12" deep ice bin section



SYMBOL: BA9

LOCATION: Bar

REFERENCE: Enlarged Floor Plans

ADDITIONAL INFORMATION: Accessories include: Built-in 20 gauge Sound Deadened Krowne Royal Single Speedrail, Stainless steel sliding cover, Eight Circuit Cold Plate, Condiment Tray, Stainless Steel Divider, Towel Ring, Side Splash (right), Cap Catcher and Opener, 15" deep liner on Ice Bin

SPECIFICATIONS

PROJECT TITLE: Gaylord Sands
PROJECT NUMBER: 00956

MANUFACTURER: Krowne

ITEM NUMBER: RS-96

COLOR: N/A

FINISH: Stainless Steel

DESCRIPTION: Royal Single Speedrail with black sound deadening ABS polymer plastic



SYMBOL: BA1

LOCATION: Bar

REFERENCE: Enlarged Floor Plans

ADDITIONAL INFORMATION: N/A

SPECIFICATIONS

PROJECT TITLE: Gaylord Sands
PROJECT NUMBER: 00956

MANUFACTURER: Keg Works

ITEM NUMBER: LLD3-30L

COLOR: N/A

FINISH: Vinyl-clad metal, Clear Acrylic

DESCRIPTION: 3 Tier Lighted Liquor Bottle Display Shelf



LOCATION: Bar

REFERENCE: Enlarged Floor Plans

ADDITIONAL INFORMATION: N/A



PLUMBING EQUIPMENT

SPECIFICATIONS

PROJECT TITLE: Gaylord Sands
PROJECT NUMBER: 00956

MANUFACTURER: BRADLEY

ITEM: SERIES 500

COLOR: BLACK

FINISH: DECORATIVE LAMINATE

DESCRIPTION: TOILET STALL DIVIDERS



SYMBOL: TA15

LOCATION: 1ST AND 2ND FLOOR PUBLIC RESTROOM

REFERENCE: ENLARGED FLOORPLAN

ADDITIONAL INFORMATION:

SPECIFICATIONS

PROJECT TITLE: Gaylord Sands
PROJECT NUMBER: 00956

MANUFACTURER: ADAPTIVE ACCESS

ITEM: N/A

COLOR: N/A

FINISH: TYPE 304 BRUSHED
SATIN STAINLESS STEEL

DESCRIPTION: GRAB BARS



SYMBOL: TA13

LOCATION: 1ST AND 2ND FLOOR ACCESSIBLE RESTROOMS

REFERENCE: ENLARGED FLOORPLAN

ADDITIONAL INFORMATION:

SPECIFICATIONS

PROJECT TITLE: Gaylord Sands
PROJECT NUMBER: 00956

MANUFACTURER: KOHLER

ITEM: K-4406-L-0

COLOR: PURE WHITE

FINISH: VITREOUS CHINA

DESCRIPTION: WATER CLOSET



LOCATION: 1ST AND 2ND FLOOR RESTROOMS

REFERENCE: ENLARGED FLOORPLAN



SYMBOL: TA2 & 15

ADDITIONAL INFORMATION:

TOILET SEAT COVER – KOHLER

ITEM NUMBER: K-4666-C

COLOR: WHITE

FINISH: SOLID POLYPROPOLYENE

SPECIFICATIONS

PROJECT TITLE: Gaylord Sands
PROJECT NUMBER: 00956

MANUFACTURER: KOHLER

ITEM: K-4919-96

COLOR: WHITE

FINISH: VITREOUS CHINA

DESCRIPTION: URINAL



SYMBOL: TA16

LOCATION: 1ST AND 2ND FLOOR MALE RESTROOMS

REFERENCE: ENLARGED FLOOR PLAN

ADDITIONAL INFORMATION:

SPECIFICATIONS

PROJECT TITLE: Gaylord Sands
PROJECT NUMBER: 00956

MANUFACTURER: KOHLER

ITEM: K-2330-N

COLOR: WHITE

FINISH: VITEROUS CHINA

DESCRIPTION: LAVATORY



SYMBOL: TA1

LOCATION: 1ST AND 2ND FLOOR PUBLIC RESTROOMS

REFERENCE: ENLARGED FLOORPLAN

ADDITIONAL INFORMATION:

SPECIFICATIONS

PROJECT TITLE: Gaylord Sands
PROJECT NUMBER: 00956

MANUFACTURER: SLOAN

ITEM: ET-800

COLOR: CHROME

FINISH: CHROME PLATED BRASS

DESCRIPTION: FAUCET



SYMBOL: TA12

LOCATION: PER EVERY LAVATORY SPECIFIED

REFERENCE: ENLARGED FLOORPLAN

ADDITIONAL INFORMATION:

SPECIFICATIONS

PROJECT TITLE: Gaylord Sands
PROJECT NUMBER: 00956

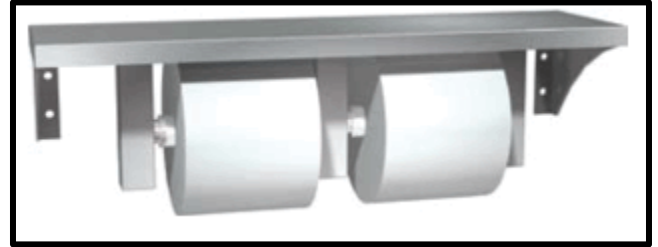
MANUFACTURER: ALL PARTITIONS & PARTS

ITEM: A0697

COLOR: N/A

FINISH: STAINLESS STEEL

DESCRIPTION: TOILET TISSUE DISPENSER



SYMBOL: TA10

LOCATION: 1ST AND 2ND FLOOR RESTROOM STALLS

REFERENCE: ENLARGED FLOORPLAN

ADDITIONAL INFORMATION:

SPECIFICATIONS

PROJECT TITLE: Gaylord Sands
PROJECT NUMBER: 00956

MANUFACTURER: ALL PARTITIONS & PARTS

ITEM: 0462-AD

COLOR: N/A

FINISH: STAINLESS STEEL

DESCRIPTION: TOWEL DISPENSER



SYMBOL: TA14

LOCATION: 1ST AND 2ND FLOOR RESTROOMS

REFERENCE: ENLARGED FLOORPLAN

ADDITIONAL INFORMATION:

SPECIFICATIONS

PROJECT TITLE: Gaylord Sands
PROJECT NUMBER: 00956

MANUFACTURER: SLOAN

ITEM: SJS-1001-1

COLOR: CHROME & BLACK

FINISH: CHROME

DESCRIPTION: SOAP DISPENSER



SYMBOL: TA5

LOCATION: NEAR SINKS IN 1ST AND 2ND FLOOR RESTROOMS

REFERENCE: ENLARGED FLOORPLAN

ADDITIONAL INFORMATION:

SPECIFICATIONS

PROJECT TITLE: Gaylord Sands
PROJECT NUMBER: 00956

MANUFACTURER: RUBBERMAID

ITEM NUMBER: 6140

COLOR: WHITE

FINISH: N/A

DESCRIPTION: SURFACE MOUNTED
SANITARY DISPOSAL BIN



SYMBOL: TA9

LOCATION: FIRST & SECOND FLOOR PUBLIC FEMALE RESTROOM

REFERENCE: ENLARGED FLOORPLAN SHEET 6&7

ADDITIONAL INFORMATION:

SPECIFICATIONS

PROJECT TITLE: Gaylord Sands
PROJECT NUMBER: 00956

MANUFACTURER: SLOAN

ITEM NUMBER: EHD-501

COLOR: N/A

FINISH: STAINLESS STEEL

DESCRIPTION: HAND BLOW DRYER



SYMBOL: TA7

LOCATION: FIRST FLOOR, SECOND FLOOR RESTROOMS

REFERENCE: ENLARGED FLOOR PLAN SHEET 6 & 7

ADDITIONAL INFORMATION:

SPECIFICATIONS

PROJECT TITLE: Gaylord Sands
PROJECT NUMBER: 00956

MANUFACTURER: RUBBERMADE

ITEM NUMBER: 7818-88

COLOR: SOFT GRAY

FINISH: ANTIMICROBIAL RECYCLED PLASTIC

DESCRIPTION: BABY CHANGING STATION



SYMBOL: TA11

LOCATION: 1ST AND 2ND FLOOR PUBLIC RESTROOMS

REFERENCE: ENLARGED FLOORPLAN SHEET 6 & 7

ADDITIONAL INFORMATION:

SPECIFICATIONS

PROJECT TITLE: Gaylord Sands
PROJECT NUMBER: 00956

MANUFACTURER: ALL PARTITION

ITEM NUMBER: 0462 AD

COLOR: N/A

FINISH: STAINLESS STEEL SATIN

DESCRIPTION: COMBINATION PAPER TOWEL RECEPTACLE AND TRASH CONTAINER TWO IN ONE.



SYMBOL: TA 14

LOCATION: FIRST AND SECOND FLOOR PUBLIC AND PRIVATE RESTROOMS

REFERENCE: ENLARGED FLOOR PLAN SHEET 6 AND 7

ADDITIONAL INFORMATION:

SPECIFICATIONS

PROJECT TITLE: Gaylord Sands
PROJECT NUMBER: 00956

MANUFACTURER: PARISH SUPPLIERSz

ITEM: 0230001

COLOR: WHITE

FINISH: METAL WITH ENAMEL COATING

DESCRIPTION: FEMININE NAPKIN DISPENSER



LOCATION: 1ST AND 2ND FLOOR FEMALE RESTROOMS

SYMBOL: TA8

REFERENCE: ENLARGED FLOORPLAN

ADDITIONAL INFORMATION:

SPECIFICATIONS

PROJECT TITLE: Gaylord Sands
PROJECT NUMBER: 00956

MANUFACTURER: HARBOR CITY SUP.

ITEM: URWH

COLOR: N/A

FINISH: STAINLESS STEEL

DESCRIPTION: URINAL BLINDS



SYMBOL: TA16

LOCATION: 1ST AND 2ND FLOOR PUBLIC MALE RESTROOMS

REFERENCE: ENLARGED FLOORPLAN SHEET 6 & 7

ADDITIONAL INFORMATION:

SPECIFICATIONS

PROJECT TITLE: Gaylord Sands
PROJECT NUMBER: 00956

MANUFACTURER: KC PROFESSIONALS

ITEM: 09512

COLOR: N/A

FINISH: STAINLESS STEEL

DESCRIPTION: SEAT COVER DISPENSER



SYMBOL: TA17

LOCATION: 1ST AND 2ND FLOOR RESTROOM STALLS

REFERENCE: ENLARGED FLOORPLAN

ADDITIONAL INFORMATION:



i n t e r i o r s

FURNITURE

SPECIFICATIONS

PROJECT TITLE: Gaylord Sands
PROJECT NUMBER: 00956

MANUFACTURER: Desiron

ITEM NUMBER: DSO1005

COLOR: Walnut

FABRIC: C.O.M Designtex (*below*)

QUANTITY: 188



DESCRIPTION: Dining Chair

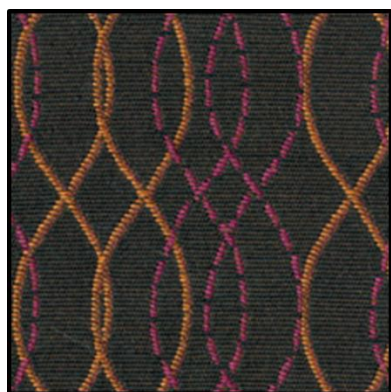
SYMBOL: C1

Overall Dimensions: 32" H x 19" W x 19" D

LOCATION: Upstairs and Downstairs

REFERENCE: Furniture Installation Sheet

UPHOLSTERY



MANUFACTURER: Designtex

STYLE NUMBER: 3233 902 Maglia

COLOR: Noir

WIDTH: 54"

FINISH: NANOSPHERE

SPECIFICATIONS

PROJECT TITLE: Gaylord Sands
PROJECT NUMBER: 00956

MANUFACTURER: Made in Germany by Vitra

ITEM: Panton Amoeba chair

COLOR: Black 01

FINISH: 90% new wool, 10% helanca

QUANTITY: 4

DESCRIPTION: Modern curved lounge chair.
 31.75" h 24.5" w 32.5" d
 Laminated structure, foam upholstery

LOCATION: Waiting area on the main floor.

REFERENCE: Furniture Installation Sheet



SYMBOL: C2

ADDITIONAL INFORMATION: Wool fabric by manufacturer as shown above.

SPECIFICATIONS

PROJECT TITLE: Gaylord Sands
PROJECT NUMBER: 00956

MANUFACTURER: Custom

ITEM NUMBER: N/A

COLOR:

FINISH: Laminate



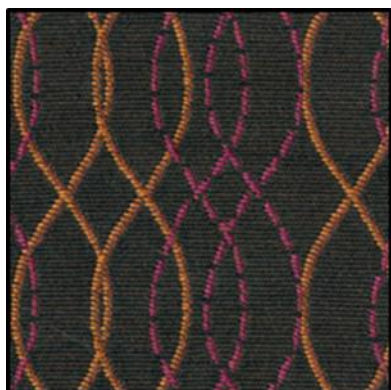
SYMBOL: B1, B2

DESCRIPTION: Custom designed curved booth. Seats 4 people. 90"x90"

LOCATION: Main floor

REFERENCE: Furniture Installation Sheet

UPHOLSTERY ON BACK



MANUFACTURER: Designtex

STYLE NUMBER: 3233 902 Maglia

COLOR: Noir

WIDTH: 54"

FINISH: NANOSPHERE

DESCRIPTION: Squiggles

UPHOLSTERY ON SEAT



MANUFACTURER: Designtex

STYLE NUMBER: 2696 801

COLOR: Smoke

WIDTH: 53"

FINISH: Urethane

DESCRIPTION: Figure Eight Pattern

LAMINATE CONSTRUCTION



MANUFACTURER: Wilsonart

STYLE NUMBER: 4882

COLOR: Oiled Soapstone

FINISH: Laminate

DESCRIPTION: Fine Velvet Texture

SYMBOL: L1

TABLE TOP



MANUFACTURER: Dupont

STYLE NUMBER: N/A

COLOR: Lunar Pearl

FINISH: Quartz

DESCRIPTION: Smooth and shiny surface

SPECIFICATIONS

PROJECT TITLE: Gaylord Sands
PROJECT NUMBER: 00956

MANUFACTURER: Steelcase

ITEM NUMBER: N/A

FINISH: Designtex Fabric (*below*)



SYMBOL: C3

DESCRIPTION: Platinum Swivel Base

LOCATION: Manager's office

REFERENCE: Furniture Installation Sheet

UPHOLSTERY ON BACK



MANUFACTURER: Designtex

STYLE NUMBER: 3239 802

COLOR: Flux

WIDTH: 54"

FINISH: NANOSPHERE

DESCRIPTION: Swirly

SPECIFICATIONS

PROJECT TITLE: Gaylord Sands
PROJECT NUMBER: 00956

MANUFACTURER: ZUO Modern

ITEM NUMBER: 301113

COLOR: White Equino Bar Stool

FINISH: Leatherette seat and steel frame

DESCRIPTION: N/A



SYMBOL: S1

LOCATION: Bar stools at bar

REFERENCE: Furniture Installation Sheet

ADDITIONAL INFORMATION: N/A



i n t e r i o r s

FINISHES

SPECIFICATIONS

PROJECT TITLE: Gaylord Sands
PROJECT NUMBER: 00956

MANUFACTURER: Dupont

ITEM NUMBER: N/A

COLOR: Galaxy Black

FINISH: Quartz



SYMBOL: T2, T3, CT1

DESCRIPTION: Custom detached tables (T-2, T-3), restroom countertops (CT-1), bar counters (CT-2).

LOCATION: Main floor and second floor

REFERENCE: Furniture Installation Sheet

ADDITIONAL INFORMATION: N/A

SPECIFICATIONS

PROJECT TITLE: Gaylord Sands
PROJECT NUMBER: 00956

MANUFACTURER: 3Form

ITEM NUMBER: N/A

COLOR: Unravel White

FINISH: 3 Form synthetic material

DESCRIPTION: Gauge 1/4"



SYMBOL: 3F1

LOCATION: First and second floors

REFERENCE: Finish Installation Sheet

ADDITIONAL INFORMATION: N/A

SPECIFICATIONS

PROJECT TITLE: Gaylord Sands
PROJECT NUMBER: 00956

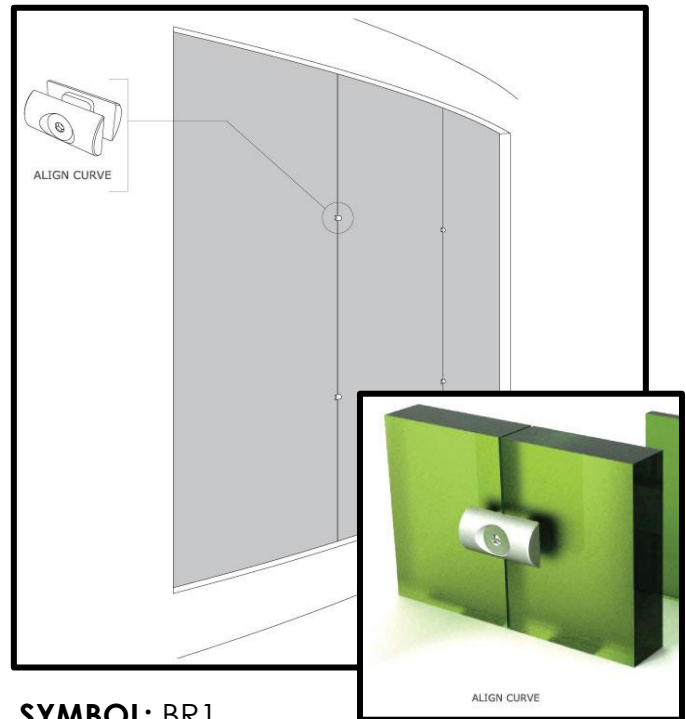
MANUFACTURER: 3Form

ITEM: Align Curve

COLOR: N/A

FINISH: Stainless steel and metal

DESCRIPTION: Brackets for custom curved design elements.



SYMBOL: BR1

LOCATION: First and second floors

REFERENCE: Finish Installation Sheet

ADDITIONAL INFORMATION: N/A

SPECIFICATIONS

PROJECT TITLE: Gaylord Sands
PROJECT NUMBER: 00956

MANUFACTURER: Dupont

ITEM NUMBER: N/A

COLOR: Lunar Pearl

FINISH: Quartz



SYMBOL: T2, T3, CT1

DESCRIPTION: Custom detached tables (T-2, T-3), restroom countertops (CT-1), bar counters (CT-2).

LOCATION: Main floor and second floor in bar areas

REFERENCE: Finish Installation Sheet

ADDITIONAL INFORMATION: N/A

SPECIFICATIONS

PROJECT TITLE: Gaylord Sands
PROJECT NUMBER: 00956

MANUFACTURER: Wilsonart

STYLE NUMBER: 4882

COLOR: Oiled Soapstone

FINISH: Laminate



SYMBOL: L1

DESCRIPTION: Bar Cabinetry and Restroom cabinetry.

LOCATION: Cabinetry in restaurant.

ADDITIONAL INFORMATION: N/A

SPECIFICATIONS

PROJECT TITLE: Gaylord Sands
PROJECT NUMBER: 00956

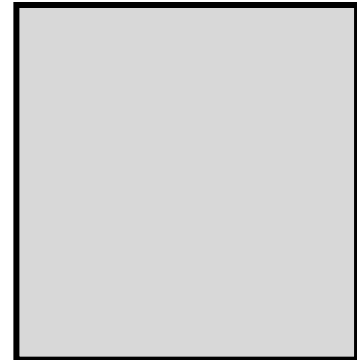
MANUFACTURER: Sherwin Williams

ITEM: SW 7673

COLOR: Pewter Cast

FINISH: Satin

DESCRIPTION: Paint



SYMBOL: P2

LOCATION: First and second floors

REFERENCE: Finish Installation Sheet

ADDITIONAL INFORMATION: N/A

SPECIFICATIONS

PROJECT TITLE: Gaylord Sands
PROJECT NUMBER: 00956

MANUFACTURER: Sherwin Williams

ITEM: SW 7005

COLOR: Pure White

FINISH: Satin

DESCRIPTION: Paint



SYMBOL: P1

LOCATION: First and second floors

REFERENCE: Finish Installation Sheet

ADDITIONAL INFORMATION: N/A

SPECIFICATIONS

PROJECT TITLE: Gaylord Sands
PROJECT NUMBER: 00956

MANUFACTURER: Johnsonite

ITEM: N/A

COLOR: Black

FINISH: Rubber/Vinyl



SYMBOL: BA1

DESCRIPTION: Wall Base

LOCATION: Every wall base in restaurant.

REFERENCE: Finish Installation Sheet

ADDITIONAL INFORMATION: Equinox™ (MW-XX-R): 3/8" (9.53mm) thick by 4-1/2" (11.43cm) high wall base profile, 5 per carton, 8 ft lengths, 40 ft (10.16m) per carton, 50 lbs (22.6kg) per carton

SPECIFICATIONS

PROJECT TITLE: Gaylord Sands
PROJECT NUMBER: 00956

MANUFACTURER: Dalfile

ITEM NUMBER: P266

COLOR: Black Drama

FINISH: Porcelain

DESCRIPTION: Porcelain Tile (12x24 Field Tile)



SYMBOL: PORC1

LOCATION: Upstairs and Downstairs

REFERENCE: Finish Installation Sheet

ADDITIONAL INFORMATION: N/A

SPECIFICATIONS

PROJECT TITLE: Gaylord Sands
PROJECT NUMBER: 00956

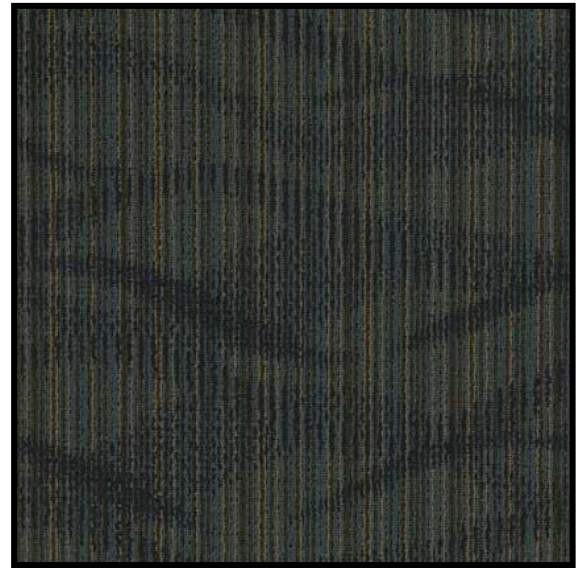
MANUFACTURER: Mannington Commercial

ITEM NUMBER: Deep Thoughts

COLOR: Imagine

TYPE: Carpet Tile

DESCRIPTION: Carpet Tile in dining areas



SYMBOL: CPT1

LOCATION: Upstairs and Downstairs

REFERENCE: Finish Installation Sheet

ADDITIONAL INFORMATION: N/A

SPECIFICATIONS

PROJECT TITLE: Gaylord Sands
PROJECT NUMBER: 00956

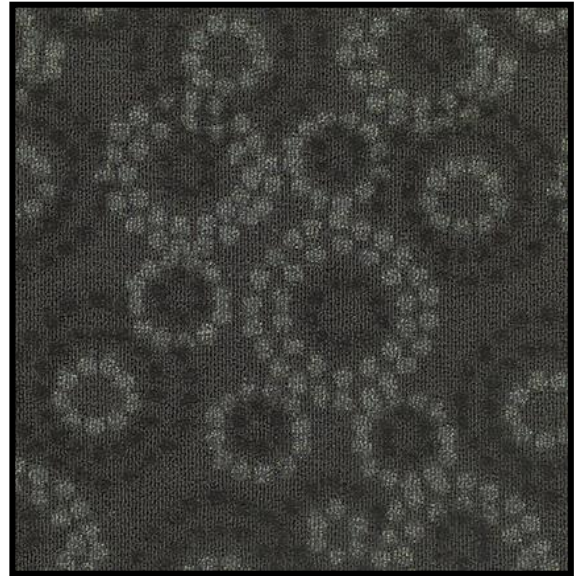
MANUFACTURER: Mannington Commercial

ITEM NUMBER: Continuity

COLOR: Argali

TYPE: Capret Tile

DESCRIPTION: Carpet tile in dining areas.



SYMBOL: CPT2

LOCATION: Upstairs and Downstairs

REFERENCE: Finish Installation Sheet

ADDITIONAL INFORMATION: N/A

SPECIFICATIONS

PROJECT TITLE: Gaylord Sands
PROJECT NUMBER: 00956

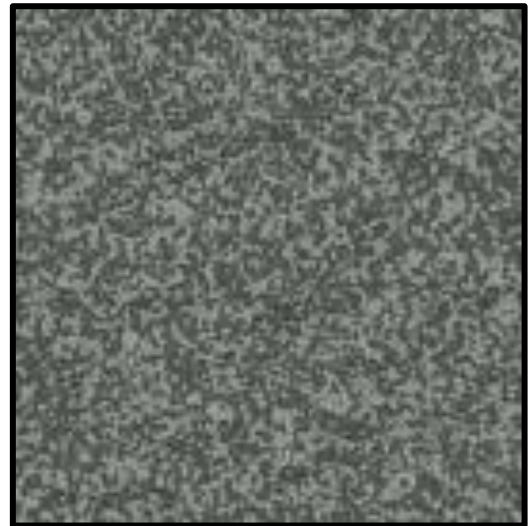
MANUFACTURER: Metz

ITEM: R12.V4

COLOR: Graphite

FINISH: Slip Resistant Ceramic

DESCRIPTION: Kitchen floor and base/
 bar floor and wall base



SYMBOL: CER1

LOCATION: Kitchen, up and downstairs bars, employee areas.

REFERENCE: Finish Installation Sheet

ADDITIONAL INFORMATION: Wall base is made from tile which is cut 4" high.



i n t e r i o r s

LIGHTING

SPECIFICATIONS

PROJECT TITLE: Gaylord Sands
PROJECT NUMBER: 00956

MANUFACTURER: Trend Lighting

ITEM: TP6300-3

MATERIALS: Acrylic/Metal

FINISH: Clear Acrylic/Satin Silver

DESCRIPTION: 3 40-Watt lamps.
 Overall height is 80"



P1

LOCATION: First floor entrance, downstairs bar, upstairs bar

REFERENCE:

ADDITIONAL INFORMATION:

SPECIFICATIONS

PROJECT TITLE: Gaylord Sands
PROJECT NUMBER: 00956

MANUFACTURER: Oggetti

ITEM: 18-P210

COLOR: Available in many colors and styles

FINISH: Chrome



P2

DESCRIPTION: 520247G. Mouth-blown glass from Venice, Italy. Each globe is different. 31.5" in height, 14.75" wide, with a 120" wire length. 21 25-Watt halogens

LOCATION: Located above the booths on the first and second floors

REFERENCE:

ADDITIONAL INFORMATION:

SPECIFICATIONS

PROJECT TITLE: Gaylord Sands
PROJECT NUMBER: 00956

MANUFACTURER: Varaluz

ITEM: 123P01

COLOR:

FINISH: Aluminum



P3

DESCRIPTION: 3950466. The light that is the result of when eco-sensibility meets contemporary elegance. 1 100-Watt incandescent

LOCATION: Located on the second floor in the grand staircase

REFERENCE:

ADDITIONAL INFORMATION:

SPECIFICATIONS

PROJECT TITLE: Gaylord Sands
PROJECT NUMBER: 00956

MANUFACTURER: Glow Lighting

ITEM: 567BD16LSP-1

COLOR: Crystal

FINISH: Silver Pearl



P4

DESCRIPTION: 2338328.16-light chandelier; 60-Watt incandescent

LOCATION: Located above the stage

REFERENCE:

ADDITIONAL INFORMATION:

SPECIFICATIONS

PROJECT TITLE: Gaylord Sands
PROJECT NUMBER: 00956

MANUFACTURER: WAC Lighting

ITEM: DR-G352

COLOR: yellow, red, green, blue, white

FINISH:

DESCRIPTION: A total of 5 different colored bulbs available



R1

LOCATION: General recessed lighting in the public areas on the first and second floors

REFERENCE:

ADDITIONAL INFORMATION:

SPECIFICATIONS

PROJECT TITLE: Gaylord Sands
PROJECT NUMBER: 00956

MANUFACTURER: Juno Lighting Group

ITEM: 70-WH

COLOR:

FINISH: White



R2

DESCRIPTION: 3560249. 100-Watt
 11.125" x 11/125"

LOCATION: General recessed lighting in the employee areas and the kitchen

REFERENCE:

ADDITIONAL INFORMATION:

SPECIFICATIONS

PROJECT TITLE: Gaylord Sands
PROJECT NUMBER: 00956

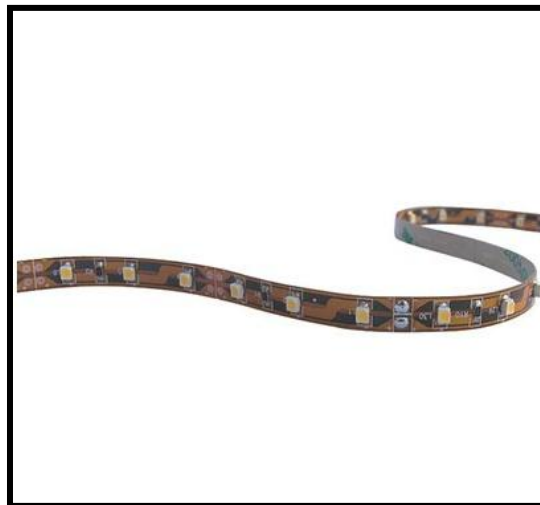
MANUFACTURER: National Lighting

ITEM: LEDR-ROLLWH

COLOR:

FINISH:

DESCRIPTION: Contains 60 LEDs per meter



UC1

LOCATION: Located under the counter in both bar areas

REFERENCE:

ADDITIONAL INFORMATION: Energy consumption: 1.5 watts per foot compared to incandescent linear light that draws 20-40 watts per foot

SPECIFICATIONS

PROJECT TITLE: Gaylord Sands
PROJECT NUMBER: 00956

MANUFACTURER: DVI

ITEM: DVP8787-BN

COLOR:

FINISH: Buffed Nickel

DESCRIPTION: 4 light linear track;
 Adjustable during installation. 4 75-Watt
 120v halogen



T1

LOCATION: Used as accent lighting throughout both floors of the restaurant and as task lighting in the bar areas and the wait stations

REFERENCE:

ADDITIONAL INFORMATION:

SPECIFICATIONS

PROJECT TITLE: Gaylord Sands
PROJECT NUMBER: 00956

MANUFACTURER: Progress Lighting

ITEM: P2905-09

COLOR:

FINISH:



W1

DESCRIPTION: 4 light vanity light;
 installed horizontally. 6" tall, 34" wide
 4 100-Watt incandescents

LOCATION: Located in all bathrooms by the vanity

REFERENCE:

ADDITIONAL INFORMATION:

SPECIFICATIONS

PROJECT TITLE: Gaylord Sands
PROJECT NUMBER: 00956

MANUFACTURER: Panasonic

ITEM: FV

COLOR:

FINISH:



EX1

DESCRIPTION: Ventilation bathroom Exhaust fan. Designed to fit 2"x6" joists or larger

LOCATION: Located in each bathroom

REFERENCE:

ADDITIONAL INFORMATION: Includes two Panasonic Quick Start 13 watt fluorescent lamps and a 4 watt night-light.

SPECIFICATIONS

PROJECT TITLE: Gaylord Sands
PROJECT NUMBER: 00956

MANUFACTURER: High-Lites

ITEM: 12GC-14

COLOR: White

FINISH: Steel



DESCRIPTION: 9-Watt incandescent(each head)

EL1

LOCATION: Near main exits, in restrooms, and in the kitchen

REFERENCE:

ADDITIONAL INFORMATION:

SPECIFICATIONS

PROJECT TITLE: Gaylord Sands
PROJECT NUMBER: 00956

MANUFACTURER: The Exit Store

ITEM: CA-B-R-BB

COLOR: Black

FINISH: Cast Aluminum



EX1

DESCRIPTION: Die-cast aluminum low profile (ADA compliant) housing, brushed aluminum, black or white finish. Brushed aluminum, black or white finish faceplates with concealed snap out directional arrows.

LOCATION: Near main exits, in restrooms, and in the kitchen

REFERENCE:

ADDITIONAL INFORMATION: Dual 120/277V voltage. Charge rate/power on LED indicator light and push-to-test switch for mandated code compliance testing.



HARDWARE

SPECIFICATIONS

PROJECT TITLE: Gaylord Sands
PROJECT NUMBER: 00956

MANUFACTURER: Brass Accents

ITEM: KP629

COLOR:

FINISH: Polished Stainless Steel

DESCRIPTION: Polished Stainless Steel Kick Plates are available in 6" x 8" heights and several widths. You can also choose from screw mount, magnetic mount and adhesive mount.



LOCATION: All doors

REFERENCE:

ADDITIONAL INFORMATION:

SPECIFICATIONS

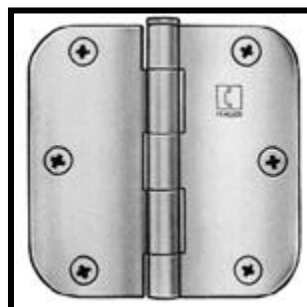
PROJECT TITLE: Gaylord Sands
PROJECT NUMBER: 00956

MANUFACTURER: Hager

ITEM: RC1842

COLOR:

FINISH: Satin Nickel



DESCRIPTION:

LOCATION: Located on all doors

REFERENCE:

ADDITIONAL INFORMATION: Hager door hinges are sold by the pair, meaning two hinges in the box with mounting screws.

SPECIFICATIONS

PROJECT TITLE: Gaylord Sands
PROJECT NUMBER: 00956

MANUFACTURER: EZSET

ITEM: EZ-S301

COLOR:

FINISH: Satin Stainless Steel



DESCRIPTION: Single cylinder deadbolt

LOCATION: Office Manager's door

REFERENCE:

ADDITIONAL INFORMATION:

SPECIFICATIONS

PROJECT TITLE: Gaylord Sands
PROJECT NUMBER: 00956

MANUFACTURER: Schlage

ITEM: FS436

COLOR:

FINISH: Satin Nickel

DESCRIPTION:



LOCATION: On the floor behind each door

REFERENCE:

ADDITIONAL INFORMATION: Welded twist link steel chain finished to match door plate and chain holder. Added guage thickness provides years of durability

SPECIFICATIONS

PROJECT TITLE: Gaylord Sands
PROJECT NUMBER: 00956

MANUFACTURER: Falcon

ITEM: SC71

COLOR:

FINISH: Aluminum

DESCRIPTION:



LOCATION: Located on doors to help them close smoothly

REFERENCE:

ADDITIONAL INFORMATION: Falcon SC70 Series heavy duty closers are built for busy commercial applications that demand reliable door control and easy maintenance. Designed for use with aluminum storefronts, SC70 closers are ANSI Grade 1, ADA compliant and deliver tough performance.

SPECIFICATIONS

PROJECT TITLE: Gaylord Sands
PROJECT NUMBER: 00956

MANUFACTURER: RBA

ITEM: WS401CCV

COLOR:

FINISH: Polished Chrome

DESCRIPTION: Special retainer cup makes rubber tamper resistant.



LOCATION: On walls behind doors to prevent damage

REFERENCE:

ADDITIONAL INFORMATION: The WS401CCV unit is designed with a concave rubber bumper which avoids damage to locks with projecting buttons, packed with wood screw and plastic anchor.

SPECIFICATIONS

PROJECT TITLE: Gaylord Sands
PROJECT NUMBER: 00956

MANUFACTURER: RBA

ITEM: GPL26BW

COLOR:

FINISH: Stainless Steel



DESCRIPTION: .050" wrought plate with
 Door Pull 26-8" centers, handles come with thru bolts.

LOCATION: In the restrooms on the pull side of the door

REFERENCE:

ADDITIONAL INFORMATION:

SPECIFICATIONS

PROJECT TITLE: Gaylord Sands
PROJECT NUMBER: 00956

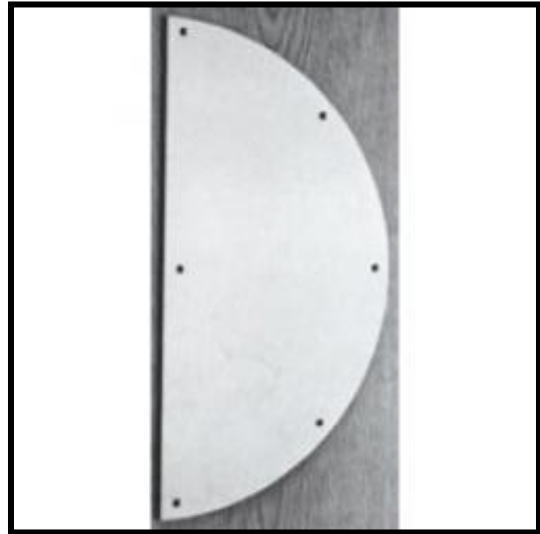
MANUFACTURER: RBA

ITEM: GPH60

COLOR:

FINISH: Stainless Steel

DESCRIPTION:



LOCATION: Located on the kitchen doors and the push side of the restrooms

REFERENCE:

ADDITIONAL INFORMATION:

SPECIFICATIONS

PROJECT TITLE: Gaylord Sands
PROJECT NUMBER: 00956

MANUFACTURER: Sure-Loc

ITEM: OS101

COLOR:

FINISH: Satin Stainless Steel



DESCRIPTION:

LOCATION:

REFERENCE:

ADDITIONAL INFORMATION:

SPECIFICATIONS

PROJECT TITLE: Gaylord Sands
PROJECT NUMBER: 00956

MANUFACTURER: Sur-Loc

ITEM: TA10

COLOR:

FINISH: Satin Stainless Steel



DESCRIPTION: The classic styling of our round Tahoe knob is always a favorite. The Tahoe is the simplest round door knob that Sure Loc offers. The round doorknobs have been very popular on construction sites.

LOCATION:

REFERENCE:

ADDITIONAL INFORMATION:

SPECIFICATIONS

PROJECT TITLE: Gaylord Sands
PROJECT NUMBER: 00956

MANUFACTURER: Harney Hardware

ITEM: 85019

MATERIAL: Zinc

FINISH: Satin Stainless Steel



DESCRIPTION: Entry Set With Interior Lever, entry pull with thumb latch, interior right handed lever, single cylinder dead bolt, ships with all mounting hardware, ANSI Grade 3, fabricated from die cast zinc

LOCATION: Front entrance to restaurant

REFERENCE:

ADDITIONAL INFORMATION:

SPECIFICATIONS

PROJECT TITLE: Gaylord Sands
PROJECT NUMBER: 00956

MANUFACTURER: Day

ITEM: 70287

COLOR:

FINISH: Stainless Steel



DESCRIPTION: Backup lighting, flow control valve - to prevent over speed during the downward movement, slack roper safeties, interlocks, negative pressure module, dictator option

LOCATION:

REFERENCE:

ADDITIONAL INFORMATION:

SPECIFICATIONS

PROJECT TITLE: Gaylord Sands
PROJECT NUMBER: 00956

MANUFACTURER: Day

ITEM: 41715

COLOR:

FINISH: Stainless Steel

DESCRIPTION: 500 lb capacity, automatic controls, travel distance of 50 ft, 220V electrical flexible power unit location



LOCATION: Located in the kitchen and upstairs in a bigger wait station

REFERENCE:

ADDITIONAL INFORMATION: The door options of this equipment include slide up, bi-parting, swing and machine access doors, it meets the 1.5-hour (B) fire rating requirement from UL, and features locks to maintain safety.

SPECIFICATIONS

PROJECT TITLE: Gaylord Sands
PROJECT NUMBER: 00956

MANUFACTURER: Tell Manufacturing Inc.

ITEM: DT100007

COLOR:

FINISH: Brass

DESCRIPTION: 4" length, kick-down,
 4 mounting screws included



LOCATION: Front doors, bathroom doors, kitchen doors (optional), hallway doors

REFERENCE:

ADDITIONAL INFORMATION:

SPECIFICATIONS

PROJECT TITLE: Gaylord Sands
PROJECT NUMBER: 00956

MANUFACTURER: Harney Hardware

ITEM: PE36ULPP

MATERIAL: Steel

FINISH: Aluminum

DESCRIPTION: 36" wide, ANSI Grade 1,
 ADA compliant



LOCATION: Emergency Exit doors, loading dock door

REFERENCE:

ADDITIONAL INFORMATION: